

A

2020

---

[lxiang@ccxi.com.cn](mailto:lxiang@ccxi.com.cn)

[xtyang@ccxi.com.cn](mailto:xtyang@ccxi.com.cn)

(010)66428877

(010)66426100

2020 06 11





AA	"	"	AA	"
----	---	---	----	---

	2017	2018	2019	2020.3
	35.26	39.11	51.86	54.26
	31.56	34.21	37.43	30.18

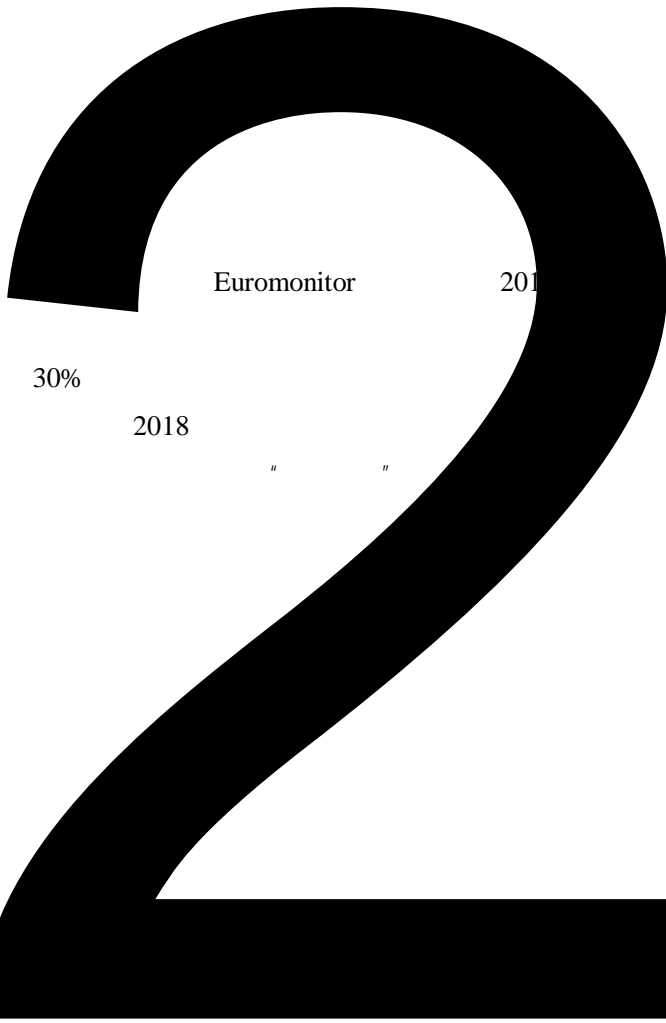
1		2019	
	9.82	1.26	

GDP 6.8% GDP 12.9 4 17  
 1992 “ ”  
 “ ”  
 GDP “ ” “ ”  
 2.5%  
 3  
 1-2  
 “ ” 3  
 CPI PPI





	2019	CR3	
20.72%		11.93%	
2018	"	"	
4.45%			
4.30%			&

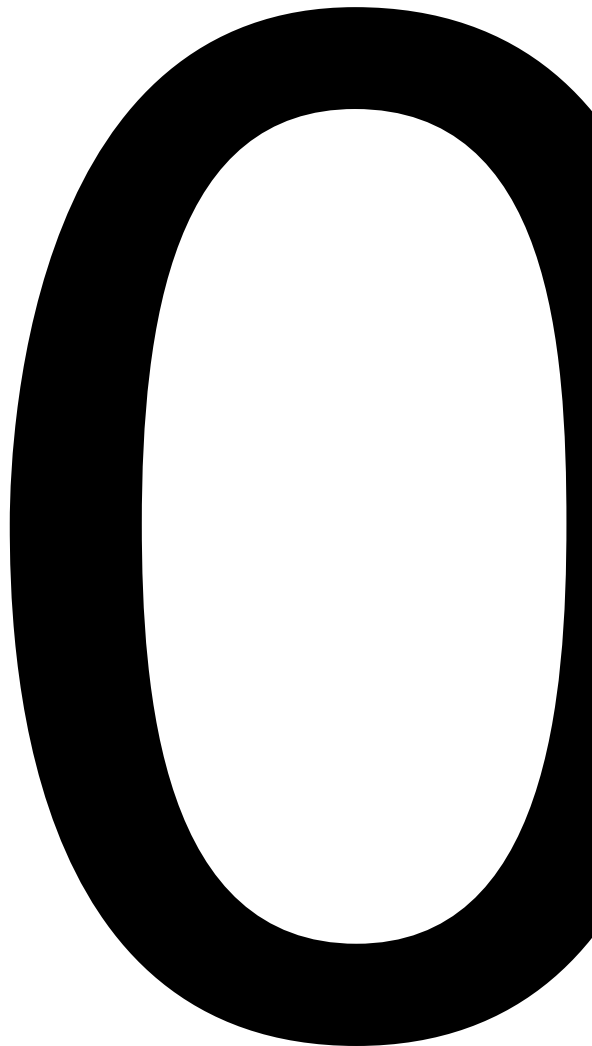


Euromonitor 201

30%

2018

" "



201  
97.94%

5.23

5.14

2019

	6	2019		%		
			2019			
		17,421.57	4,629.51	26.57	2021	6

	-0.02	0.30	0.24	0.11
	6.58	8.24	8.74	2.50
EBIT	6.59	8.24	8.88	--
EBITDA	7.94	9.72	10.51	--
EBITDA	19.45	20.10	18.62	--
	22.38	22.17	19.52	--

4

2019 1  
98.51% 0.12

9

	2017	2018	2019	2020.3
	13.60	14.24	10.78	11.71
	--	--	2.77	1.91
	3.32	4.29	4.93	5.38
	0.98	1.10	1.31	1.38
	0.34	0.32	5.95	6.60
	<b>18.68</b>	<b>20.40</b>	<b>26.22</b>	<b>27.49</b>
	11.04	12.77	15.45	16.99
	1.60	1.40	2.7	

A

2019  
2020 3  
11  
10.5

2020 3  
2020 3  
6,729  
15.06%

2020 3

2020 3

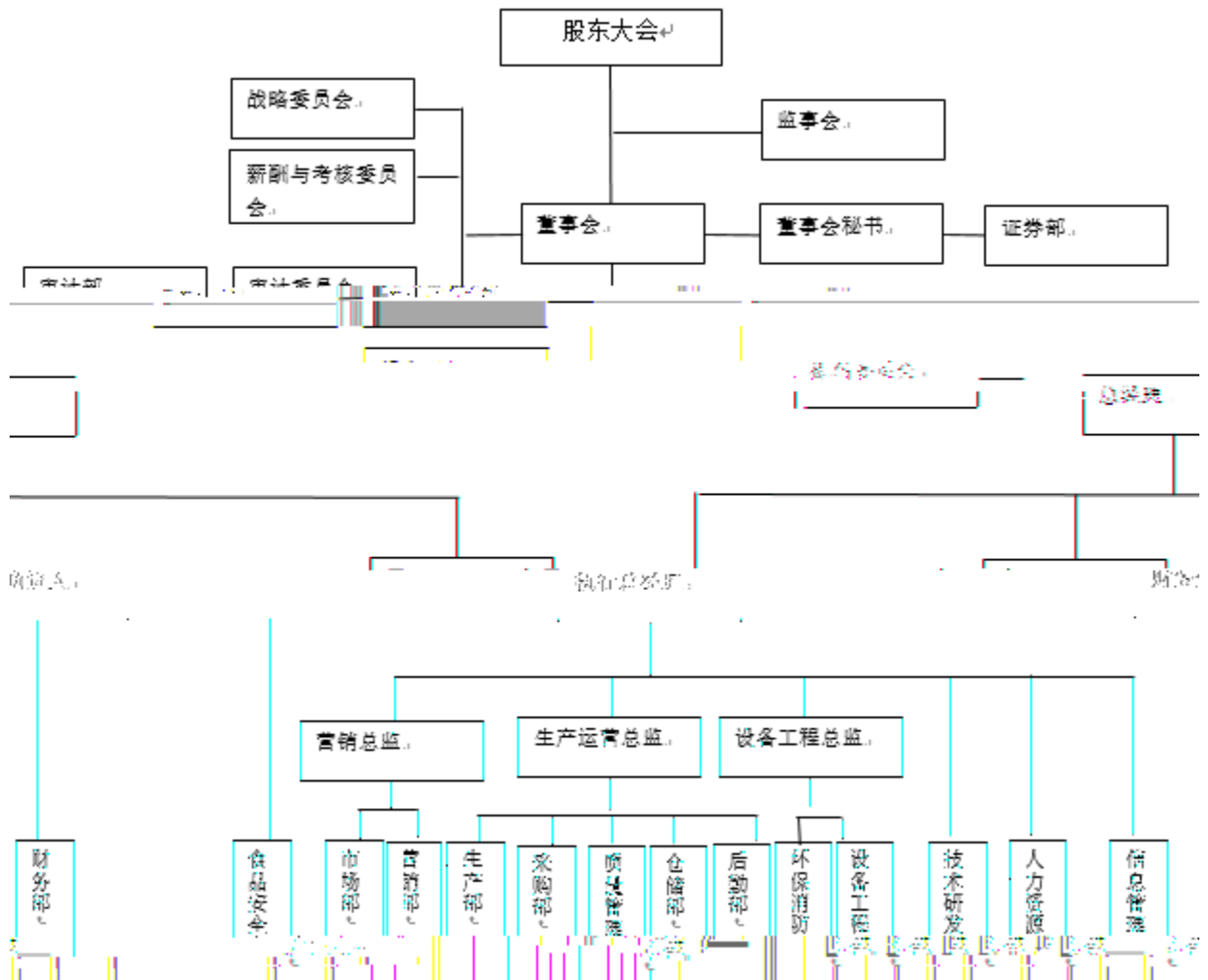
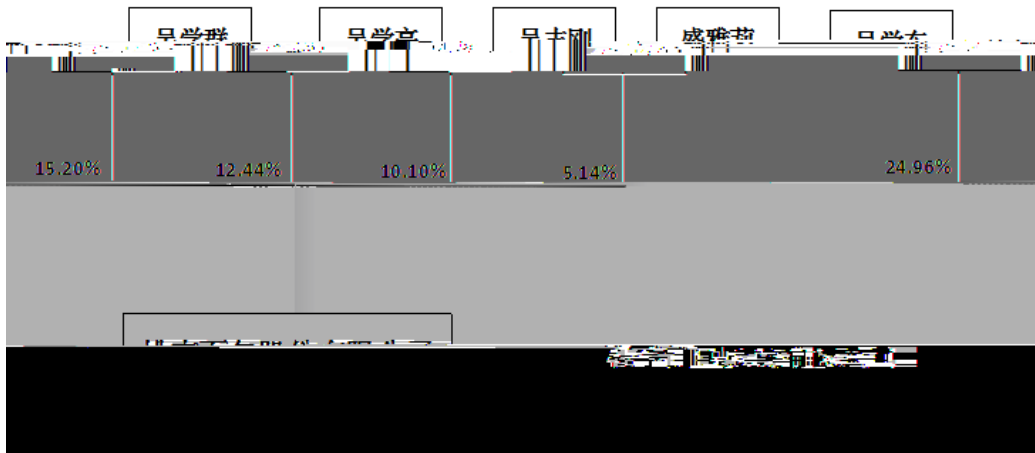
2020 3

AA

"

"

AA





		=	/
		=	
		=	/
		=	
		=	
		=	/
		=	/
		=	/
		=	/

AAA	
AA	
A	